

Rabtrad building coming along

By VANESSA SAUN
— DWU Journalism student

CONSTRUCTION works are currently underway for the new premises for Rabtrab wholesale, a subsidiary company for Chemcare Group Ltd.

Lae - based Chemcare Group Ltd (Chemcare) announced the progress of the new premises yesterday.

Rabtrab wholesale is the leading supplier of beer, wines, spirits, local imported groceries and frozen meats, packaged and dry foods.

The former site of Rabtrab and Chemcare Group head office was

destroyed by fire in September last year, allegedly by an electrical fault. As a result, the offices were relocated, with its accounting and Rabtrab sales staff to the subsidiary Niugini Wholesale Drug premises.

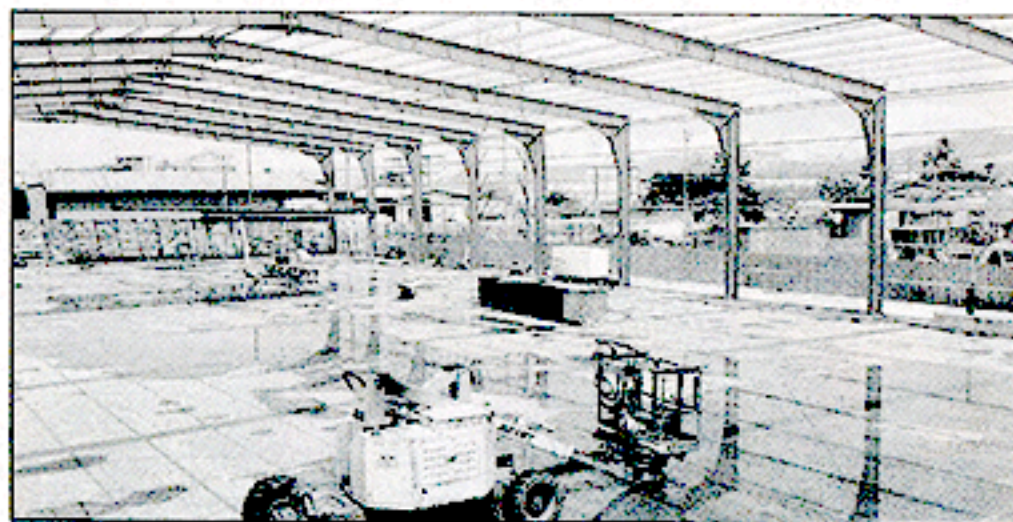
The destruction had forced Rabtrab to temporarily reduce its operations, with the capacity to service 30% of its customer base.

Rabtrab Branch Manager, Paul Savage said that they were deeply sorry for inconveniences the transition had caused to valued customers. However, they are looking forward to welcoming customers to

their new and improved Rabtrab.

Mr Savage said that with the progress of the new premises, it would allow Rabtrab to deliver a better cash and carry warehouse, and distribution offering to their customers. He added that they were confident that Rabtrab would be back to full capacity and ready to fully service the market again by the end of the year.

The new Rabtrab warehouse complex is still under construction. Situated in Mangola Street the new complex would encompass a three story office block which would be Chemcare's new head office.



NEW Rabtrab office complex under construction.

BSP making banking easy



CUSTOMERS learning more about BSP products

VOTED INTERNATIONAL PICKUP
DI **THE YEAR 2012-13**



All-New
RANGER

SHIFT-ON-THE-FLY-4WD*

Exclusive Grade Control Logic

